

Zwartven 5508 RR Veldhoven

€ 595.000,- k.k.

Kenmerken

Price: € 595.000,- k.k.

Energy label: **A+**

Gas, water & light: Exclusive

Type: Corner house

Location: Residential area

Number of rooms: 5

Number of bedrooms: 4

Volume: 523

Year of construction: 2020

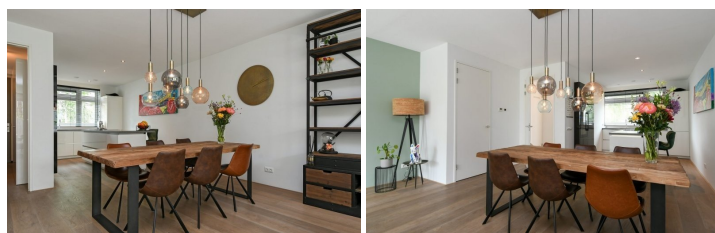
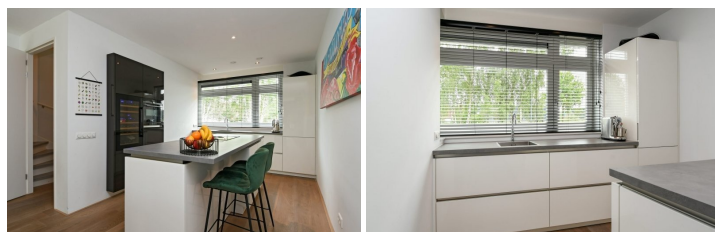
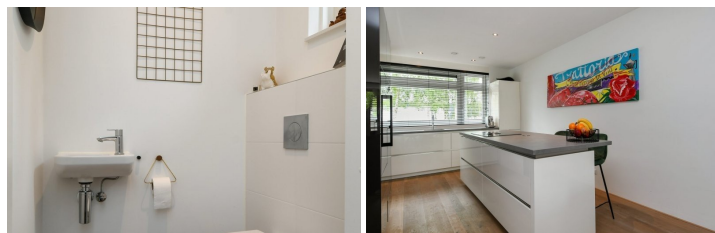
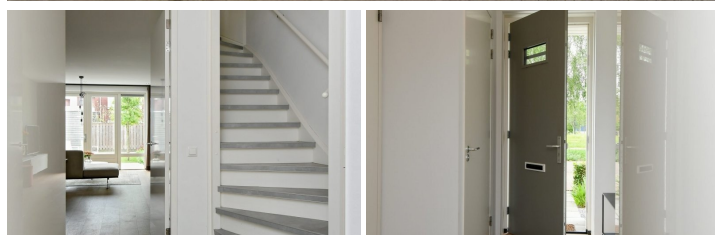
Deposit: € 59.500,-

Surface: 153 m²

Land surface: 194

Extra's

- ✓ Garden
- ✗ Parking
- ✓ Storage
- ✗ Furnishing
- ✗ Balcony
- ✗ Garage
- ✗ Immediately available
- ✗ Lift



A lovely corner house in Veldhoven, near the Meerhoven area with an energy label of A+. It's the place to be for any person looking for housing nearby Eindhoven. Featuring nine solar panels on the roof, this home not only promotes a sustainable future but also helps you save on energy bills while offering modern conveniences and an eco friendly lifestyle.

This spacious residence boasts a kitchen, bathroom, three bedrooms and an attic that can be converted into more bedrooms. The house is located in the youthful "De Kelen" neighborhood and you will have access to a private playground 1 minute away.

On a short distance from a beautiful park and the shopping center in Meerhoven, with all desired facilities within reach. Additionally, the house is centrally located with good connections to the vibrant city center of Eindhoven and major roads, close to ASML, the Maxima Medical Center, and Eindhoven Airport.

LAYOUT

Upon entering, you are welcomed in the central hall with a separate toilet. You have direct access to the toilet, the meter cupboard, the upper floor, and the spacious living room with a kitchen with an island at the front of the house. The entire ground floor is equipped with a stylish wooden floor.

Toilet

Equipped with a wall-mounted toilet, a small sink, underfloor heating, and plastered walls.

Kitchen

The modern kitchen is located at the front of the house and is arranged with a cabinet wall and a kitchen island. The wall cabinet houses storage cabinets, the combi-oven microwave, a hip-height dishwasher, and a wine climate cabinet. The large drawers in the straight setup offer enough storage space. In the front you will also find the Quooker, a fridge, and a small freezer. The kitchen island is equipped with an induction cooktop with an integrated Bora extraction system and a cozy bar. The kitchen offers everything you can imagine.

Living room

The cozy living room at the back, with patio doors to the sunny south-facing garden, invites relaxation and enjoyment of the outdoors.

First floor

Via the landing, you reach to the three bedrooms, the bathroom, and the fixed staircase to the attic. The entire floor, except for the bathroom, is equipped with a PVC floor. The largest bedroom (approximately 16m²) is located at the back of the house and has electric sunscreens. Next to the largest bedroom there is another bedroom, which is perfect for a home office or a children's room. The third bedroom is at the front of the house.

Next to the third bedroom, you can find the bathroom. The bathroom is equipped with a walk-in shower, double sink with cabinet, and a hanging toilet.

Second floor

The second floor has a large open attic that offers plenty of storage space. This space can be flexibly arranged according to your own wishes and needs.

Garden

The garden, with its green lawn and spacious terrace is perfect for both relaxation and entertainment. Additionally, there is a shed equipped with electricity. The garden is accessible via the gate, situated at the left of the house, and the gate at the back of the garden.

The private playground (accessible only to the 26 owner-occupied houses on Zwartven) features a lawn, fence, and fun play equipment for children. The monthly costs are €19.60 per month. the costs are monthly and part of the homeowner association (HOA) fees.

The location is perfect as there are bus stops around, and Eindhoven, highways, ASML, and the airport are easily accessible. To summarize, this place offers an excellent balance between relaxation and accessibility, making it an ideal home.

SPECIAL FEATURES

Luxury kitchen with all conveniences

Equipped with 9 solar panels

South-facing back garden with two access doors

Three bedrooms on the 1st floor and spacious open attic on the 2nd floor