

Heuvelrijt 5581 SN Waalre

Rental price per month € 1.850,- excl.

Kenmerken

Price: € 1.850,- excl.

Number of rooms: 4

Number of bedrooms: 3

Volume: 365

Year of construction: 2013

Deposit: € 3.500,-

Available from: 01-04-2026

Surface: 102 m²

Land surface: 111

Location: Residential area

Type: Terraced house

Energy label: **A**

Gas, water & light: Exclusive

Extra's

Garden

Parking

Storage

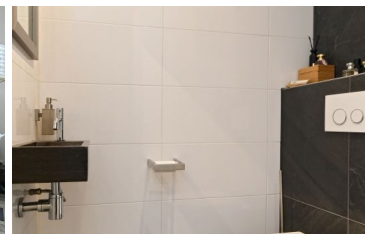
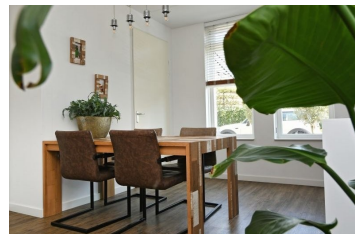
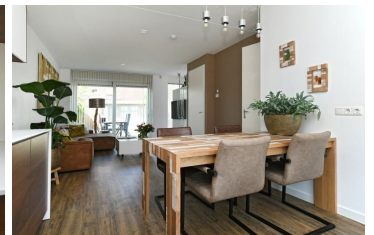
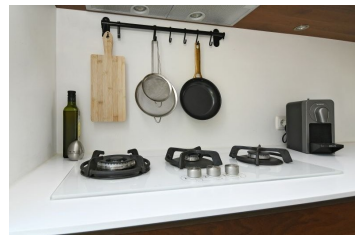
Furnishing

Balcony

Garage

Immediately available

Lift



Modernly designed, tastefully finished and very well maintained terraced house featuring a front garden, a southwest-facing backyard, a storage shed and rear access.

The property is located in a highly convenient location in relation to ASML. Within just a few minutes you can reach the High Tech Campus Eindhoven and the city center of Eindhoven, while still enjoying a quiet and green residential environment.

Layout

Ground floor

Neat front yard.

Covered entrance.

Hall with PVC floor, meter cupboard, cupboard space and luxurious toilet room with floating toilet and hard stone sink.

Cozy, spacious living room with beautiful PVC floor, stair cupboard, access to staircase, garden door, sliding doors to terrace/garden and TV cabinet.

Open kitchen, located at the front of the house, with PVC floor and luxurious, modern kitchen with Corian counter top, gas hob, extractor hood, refrigerator and dishwasher.

First floor

Large master bedroom 1 with beautiful wall closet and TV cabinet.

Spacious bedroom 2.

Luxurious bathroom with shower cabin (with rain shower), floating toilet, design radiator, cupboard space and washbasin in beautiful wall unit.

Second floor

Accessible via fixed staircase.

Landing with storage space, cupboard space, Velux skylight, central heating boiler and connection for washing equipment.

Work/study corner with large Velux skylight.

Beautifully finished attic room / bedroom 3 with large Velux skylight, closet space and access to storage attic.

Garden

Nicely landscaped backyard, located on the southwest, with terrace with electric awning, artificial grass, neat fence, outside tap and lockable back.

Salvage

Spacious, wooden storage room with electricity.

General

- This is a well maintained, modern designed house.
- The house is located in the young, popular and child-friendly residential area "Heuvelse Hof", a short distance from nature, roads, primary school, shops and sports facilities.
- Good insulation package with roof, cavity wall and floor insulation as well as fully insulating glazing.

Important:

- Available per: 13 September 2022
- The advertised rental price is based upon a rental agreement for a minimum of 12 months.
- Energy costs are not included in the rental price
- The advance energy costs will be around 100 - 150 euro a month
- Internet and tv will cost around 50 euro a month

Brick Vastgoed is the expert in housing for expats in Eindhoven.

View all our properties at www.brickvastgoed.nl