

Graspieper 5658 EN Eindhoven

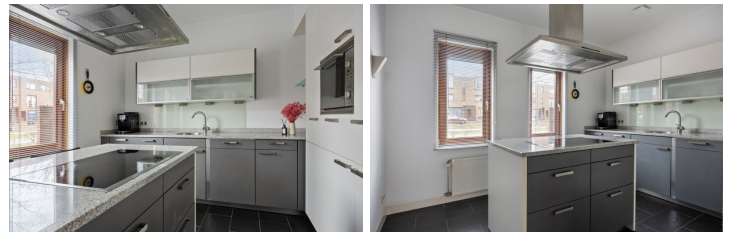
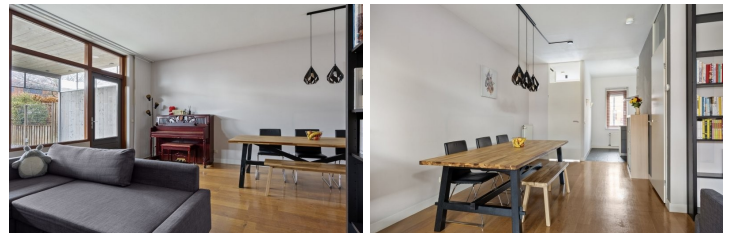
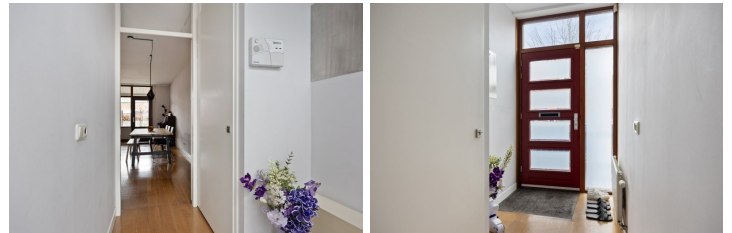
€ 585.000,- k.k.

Kenmerken

Price:	€ 585.000,- k.k.
Energy label:	A
Gas, water & light:	Exclusive
Type:	Terraced house
Location:	Residential area
Number of rooms:	6
Number of bedrooms:	4
Volume:	481
Year of construction:	2003
Deposit:	€ 58.500,-
Available from:	01-04-2026
Surface:	164 m ²
Land surface:	115

Extra's

- Garden
- Parking
- Storage
- Furnishing
- Balcony
- Garage
- Immediately available
- Lift



Welcome to this beautiful, extended, and move-in ready home with no fewer than four bedrooms and 10 solar panels! The property is located in the sought-after and family-friendly Grasrijk neighborhood in Meerhoven, offering an ideal combination of space, comfort, and a prime location.

Within walking distance, you'll find a variety of amenities, including a large landscaped park with a playground, water features, playfields, and a viewing hill. The Meerhoven shopping center is also easily accessible, featuring stores such as Kruidvat, HEMA, Albert Heijn, and Lidl. Major roads and the center of Eindhoven are well connected by both car and public transport. Several international schools and sports facilities are also nearby.

Ground Floor

A few steps lead you to the entrance of the home. The hallway features a spacious utility cupboard with a fiber-optic connection, ideal for working from home. There is also ample space for a wardrobe. The floor is finished with smoked oak wood that continues into the living room, and the walls and ceiling are neatly plastered.

The spacious L-shaped living room is divided into a seating area and a dining area. Thanks to the large rear windows, the space is exceptionally bright and offers a lovely view of the backyard. A door leads directly to the covered terrace and garden. From the living room, you can also access the open kitchen and the hallway with toilet and staircase to the first floor. The entire ground floor features double glazing.

At the front of the home is the open kitchen with an island. The kitchen is equipped with multiple upper and lower cabinets, offering plenty of storage space. The anthracite-gray tiled floor has underfloor heating. The kitchen includes built-in appliances such as a dishwasher, oven with microwave function, refrigerator, freezer, induction cooktop, and stainless steel recirculation extractor hood.

Garden

The low-maintenance backyard is accessible via the door in the living room and enjoys a sunny southwest-facing position. Directly adjacent to the house is a covered terrace equipped with sun screens, electricity, and built-in speakers. At the rear of the garden is a spacious wooden storage shed with electricity and lighting. A rear access gate leads to the communal, child-friendly courtyard, which is exclusively for residents of the adjoining homes.

Toilet

The hallway also houses the toilet, featuring a wall-mounted toilet and a stylish Sphinx sink with matching tap. The toilet is partly tiled and partly finished with plasterwork.

First Floor

The first floor includes two spacious bedrooms, an additional room, and a luxurious bathroom. The master bedroom is fitted with laminate flooring and a roller shutter. All bedrooms are equipped with electric roller shutters operated by remote control. The rear bedroom includes a practical built-in closet, making it ideal as a home office or study room.

The modern bathroom is fully tiled and features underfloor heating and two designer radiators. It also includes mechanical ventilation with a humidity sensor, a wall-mounted toilet, a walk-in shower with built-in thermostatic tap, and two contemporary sinks with mirrors and matching cabinets.

Second Floor

A fixed staircase leads to the second floor, which offers a spacious landing and access to two large bedrooms, a separate laundry room for washer and dryer, and an additional room with a practical built-in closet. The bedrooms feature laminate flooring, while the laundry area has tiled flooring. The walls and ceilings are plastered, and all windows are fitted with double glazing and roller shutters. The inverter for the solar panels is also located in the laundry room.