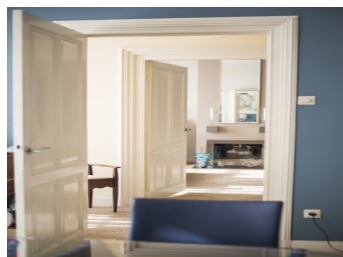




Steenweg
5707 CG Helmond
Rent per month € 1.950,- excl.



Features

Rent per month:	€ 1.950,- excl.
Address:	Steenweg
Zip code:	5707 CG
City:	Helmond
Type of house:	□
Rooms:	3
Number of bedrooms:	2
Living area:	0 m ²
Deposit:	€ 2.900,-
Location:	Residential
available:	2018-05-24
Extras:	<div> <div>✓</div> Soft furnished </div> <div> <div>✗</div> Furnished </div> <div> <div>✓</div> Garden </div> <div> <div>✓</div> Balcony / terrace </div> <div> <div>✓</div> Parking </div> <div> <div>✗</div> Elevator </div> <div> <div>✗</div> Garage </div> <div> <div>✗</div> Barn / shed </div>

Type: Penthouse
Location: Helmond (center)

Bergstraat 24
5611 JZ Eindhoven

040-2116149
info@brickvastgoed.nl

History

Around 1834, the building was built.

Around 1910 the house was rebuilt in the style of neoclassicism.

In miniature, the brick façade of the house rebuilt with embossed brick fields. At the top of mezaninelichten as windows and on the first floor 24 ruits sliding windows 5 in a row. Above the windows bricked rooster combs. The gutter with toothed edges and an arched skylight all of this under a hipped roof with a flat upper part.

Roof interior is pine wood beams across the width.

All included in the national monument because of its historical and architectural importance.

The interior is special.

layout:

The entrance of the apartment rear lamp adjacent to a city garden with carport for the parking.

Under neo-classis futuristic balcony is the original door to the porch. For safety, it is provided with an alarm A second glass door opens to a long hallway with original marble floor where the stage is going to the apartment. The staircase is carved.

First floor:

Upstairs you will arrive at a landing that connects the rooms. As at that time in 1910, all rooms are connected. Features of the rooms they are in the style of 1910 when one looks at the gestukte ceilings themes and door styles match the ceiling. It gives the feel of an Amsterdam building with ceilings with a height of 3:30 meters.

The first floor has a spacious living room with a separate dining room in the original blue color and white fireplace this room has an antique chandelier from 1910.

Rear overlooking the garden and the adjacent large outdoor patio light fitted kitchen equipped.

The kitchen is white and has a double sink with Corian sheet in one piece. The design of the kitchen is airy and modern with dishwasher and microwave and a view through to the staircase and an old balcony with wrought iron railings. | The kitchen is so spacious that easily fits a dining table with 6 chairs.

Rear light also the master bedroom with all modern conveniences and a solid wardrobe with ample storage space. The bedroom has a spacious bathroom with shower, toilet, bidet. and double sink with large cabinet size closet.

Second floor:

The staircase to the second floor gives access to the loft bedroom, this is the largest room of the house with exposed beams and a solid oak floor to restored in detail. The loft has a spiral staircase of iron patinated bronze with a lizard as decoration leading to a bedroom for two people.

The loft has glass cabinets that can be lit with antique Dutch shots which they can open and close.

Bergstraat 24
5611 JZ Eindhoven

040-2116149
info@brickvastgoed.nl

The loft has two walk-in cabinets with clothing rails over the entire length. One for storage and the other was for part washer and dryer.

In this area, the heating and boiler. Closet space and fountain.

The rear portion of the attic has a special function. This includes processing a sauna instead of a bed with a spacious balcony with cozy lighting. the balcony built into the roof and features a glass wall. Adjacent to this room is the second bathroom, a relaxation area with hot tub and steam shower. Features a skylight.

Other features of the house:

Vitrage present upholstery, curtains, Carpet, tile and parquet floors.

Lighting present, such as inbouwspots. kroonluchters. Modern wall lamps and original wall lights, patio lighting acting on the curfew and operate atmosphere lighting.

A light and safe home that exudes atmosphere.

Lock system and lockable gate for carport and shed.

Bedroom with good air conditioning.

In the summer, a quiet day and evening terrace where you can sit out freely without being seen with sliding glass wall for a view of the garden.

Modern light dimmers, and circuits with sufficient power sockets (hotel circuits).

On the ground floor is a menswear retailer established.

The building light in a charming street with ample parking and is surrounded by beautiful stylish stores.

Provision as reforming market and bakery and butcher within sight.

The Waterloo has a sophisticated feel and a Golden Tulip hotel and several good restaurants.

Walking distance to a Pathe cinema and an old church that has been converted into a theater.

The whole house has been restored and exudes atmosphere and is a pleasure to live in.

Here one lives in the city close to everything and we sleep in peace without noise.

Important:

- Available per: direct
- The advertised rental price is based upon a rental agreement for a minimum of 12 months.
- Energy costs are not included in the rental price be fixed 350 euros
- Internet and tv will cost around 50 euro a month

Brick Vastgoed is the expert in housing for expats in Eindhoven.

View all our properties at www.brickvastgoed.nl

Bergstraat 24
5611 JZ Eindhoven

040-2116149
info@brickvastgoed.nl