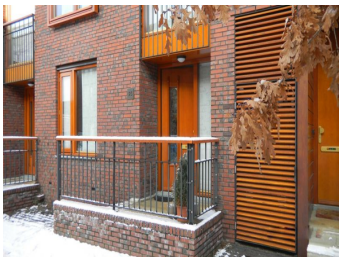




Grasmier  
5658 GE Eindhoven  
**Rent per month € 1.450,- excl.**



### Features

Rent per month:	€ 1.450,- excl.
Address:	Grasmier
Zip code:	5658 GE
City:	Eindhoven
Type of house:	Family house
Rooms:	3
Number of bedrooms:	2
Living area:	120 m <sup>2</sup>
Deposit:	€ 1.450,-
Location:	Residential
available:	2022-04-01
Extras:	<div> <div>✔</div> Soft furnished </div> <div> <div>✘</div> Furnished </div> <div> <div>✘</div> Garden </div> <div> <div>✔</div> Balcony / terrace </div> <div> <div>✔</div> Parking </div> <div> <div>✘</div> Elevator </div> <div> <div>✘</div> Garage </div> <div> <div>✔</div> Barn / shed </div>

A playful classified house with lots of light and a nice roof terrace , located on a quiet street in the young Meerhoven neighborhood with plenty of parking in front and convenient number of facilities and roads . Near

Bergstraat 24  
5611 JZ Eindhoven

**040-2116149**  
info@brickvastgoed.nl

## ASML and Eindhoven Airport

### ground floor

Through a small staircase you reach the covered entrance . The entrance leads into the spacious hall that features a slate floor , wardrobe , cupboard with 6 groups and two circuit breakers and a beautiful glass block wall .

Through 2 doors you reach the spacious dining room with slate floor , from the dining room there is an open passage to the large kitchen , which is equipped with all comforts such as a ceramic four ring hob with hood, a dishwasher , a fridge and a microwave oven.

The kitchen has a slate floor . From the kitchen you have a beautiful view of the communal courtyard . Through the kitchen to the storage room , the walls are partially tiled and there is a slate floor , the shed is equipped with heating and electricity. Through the shed you can access the communal courtyard . From the kitchen you reach a 2nd hall where the toilet is , it is equipped with a toilet and a sink and is fully tiled . In this hall is the beautiful wooden staircase to the 1st floor.

### 1st floor

Through the course with beautiful glass wall through which one sees below the kitchen , open living room , one reaches this state again in connection with the kitchen downstairs . The living room and the landing is a kind loft built with several rooms with an open connection . The hallway and the living room have a wooden floor and enjoys a lot of natural light through the large windows . From the landing access to the large roof terrace and an unobstructed view of the beautiful courtyard .

### 2nd floor

Through beautiful solid wooden staircase to 2nd floor , here is another landing with access to two bedrooms , a storage room and the bathroom .

Bedroom 1 is on the front of the house ( about 3.8 x 3.2 m ) , has 2 doors and a cupboard .

Bedroom 2 is located at the rear of the house (approx.3.2 x 2.5 m ) .

The storage room is equipped with a washing machine connection , has a tiled floor and partly tiled walls . The practical bathroom is fully tiled and has a tiled floor with underfloor heating , further bathroom with a spacious shower with thermostat , a toilet , a double washstand and a window .

### Important:

- Available per: 1 April 2022
- The advertised rental price is based upon a rental agreement for a minimum of 12 months.
- Energy costs are not included in the rental price
- The advance energy costs will be around 100 - 150 euro a month

Bergstraat 24  
5611 JZ Eindhoven

**040-2116149**  
info@brickvastgoed.nl

- Internet and tv will cost around 50 euro a month

Brick Vastgoed is the expert in housing for expats in Eindhoven.

View all our properties at [www.brickvastgoed.nl](http://www.brickvastgoed.nl)