


Roostenlaan 5644 GE Eindhoven

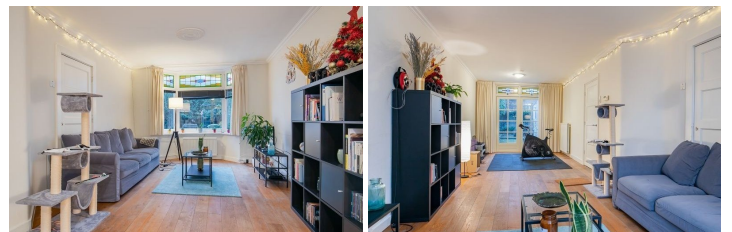
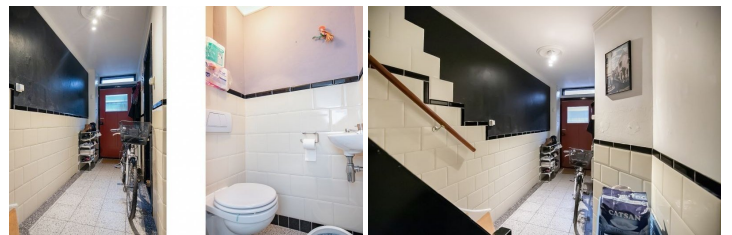
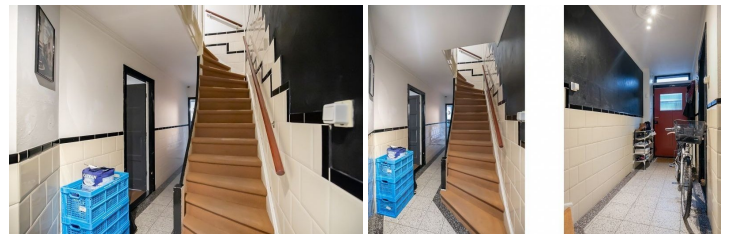
Price € 450.000,-

Kenmerken

Price:	€ 450.000,-
Number of rooms:	5
Number of bedrooms:	3
Volume:	445
Year of construction:	1928
Available from:	01-03-2022
Surface:	124 m²
Land surface:	130
Location:	Residential area
Type:	Terraced house
Energy label:	
Gas, water & light:	Exclusive

Extra's

- ✕ Garden
- ✓ Parking
- ✕ Storage
- ✓ Furnishing
- ✓ Balcony
- ✕ Garage
- ✕ Immediately available
- ✕ Lift



Excellently maintained, contemporary finished and extended 1920s mansion in a popular residential location in the Stratum district. This characteristic house offers you original authentic details.

General:

This beautiful terraced house is located in an excellent location in the Stratum district. This house is characterized by many original elements such as panel doors, stained glass windows, high ceilings and includes a cozy living room, a light, garden-oriented dining area and a west-facing backyard offering plenty of privacy.

The house is within walking distance of shops, public transport, schools and various playgrounds. Also highways, nature, sports accommodations and the center of Eindhoven are quickly accessible.

Ground floor:

Entrance:

You enter the house through the neat front garden. Upon entering, your eye is immediately drawn to the beautiful tiled floor laid in terrazo style and the high ceiling. In the deep hall are the meter cupboard, a cellar cupboard, the wardrobe and the staircase. From the hall you can continue to the living room and the kitchen.

Partly tiled toilet room with hand basin.

Spacious living room with wooden floor and a beautiful bay window. Access to the garden through French doors.

Kitchen with original tiled floor and bright kitchen furnishings.

The kitchen has a counter top with sink, gas stove, large oven, extractor hood, dishwasher, refrigerator and various cupboards and drawers.

In the kitchen there is a bright dining area, which provides access to the backyard.

First floor:

Landing with wooden floor and stairs to the second floor.

Located at the front, spacious bedroom 1 with laminate flooring, beautiful bay window and built-in closet space.

Located at the front, bedroom 2 with laminate flooring.

Room 3, located at the back, with connections for your washing equipment and access to the sunny roof terrace.

Lightly tiled bathroom with bath, shower cubicle, two washbasins and built-in cupboard space.

Second floor:

Attic/bedroom 3 with laminate flooring, dormer window over the entire width of the house and various storage space behind knee bulkheads accessible via a staircase.

Backyard:

West-facing backyard offering privacy

The backyard has ornamental paving.