

# Limburglaan 5616 ES Veldhoven

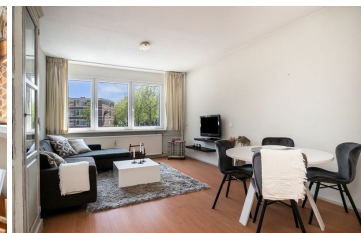
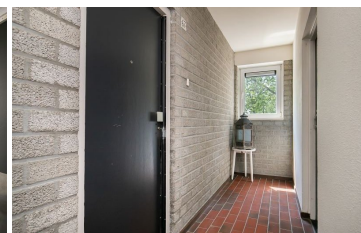
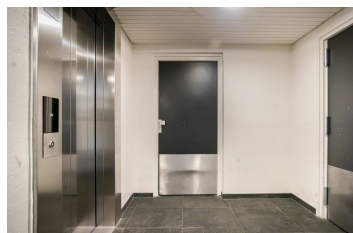
Price € 250.000,-

## Kenmerken

Price:	€ 250.000,-
Number of rooms:	2
Number of bedrooms:	1
Year of construction:	1976
Available from:	14-06-2023
Surface:	51 m <sup>2</sup>
Location:	Residential area
Type:	Apartment
Energy label:	<b>D</b>
Gas, water & light:	Exclusive

## Extra's

- ✕ Garden
- ✕ Parking
- ✕ Storage
- ✓ Furnishing
- ✕ Balcony
- ✕ Garage
- ✕ Immediately available
- ✕ Lift



**Located in a central location, this nice corner apartment with balcony and separate storage room will become available. The apartment is located on the first floor of the 'Genderparkflat' complex. In addition to a living room with open kitchen, this apartment also includes a bedroom, bathroom and storage room.**

The apartment is part of the 'Genderparkflat' complex, which is located directly on a park. The city center is also easily accessible from this location, both by bicycle and by public transport. There are also sufficient roads by car. The apartment is conveniently located for the High Tech Campus, Strijp-S and Eindhoven Airport.

#### Layout:

##### Ground floor:

Central entrance with mailboxes, intercom system and passage to a second portal with access to the storage rooms, the stairwell and the elevator. The apartment has its own storage room. There is also a slanted bicycle shed.

##### Apartment (1st floor):

Central porch with the meter cupboard (4 groups) of this apartment. The entrance to the apartment is connected to the porch, which leads to the reception hall. The intercom system is placed in the hall. From here you can access the living room, bathroom and indoor storage space. The entire apartment has a laminate floor.

The living room enjoys a lot of light through the extra windows and is of a spacious size. The living room is open to the kitchen. This kitchen is placed in a wall arrangement and is equipped with an induction hob, extractor hood, combi-microwave, fridge-freezer and sink. In addition, the kitchen has various upper and lower cabinets.

The bedroom is located next to the living room. This room is of a good size (approx. 11 m<sup>2</sup>) and therefore offers enough space for a double bed and cupboards. The balcony can also be accessed from this bedroom. This covered balcony is located on the level.

Back in the hall there is access to the bathroom. This bathroom is fully tiled and executed in light tiles. A shower, sink and toilet complete this bathroom.

The indoor storage room, which can also be accessed from the hall, offers space for the connection for the washing machine. The electric water heater is also located here. In addition, there is no storage space available yet.

#### General:

- Ready to move in 2-room corner apartment with balcony and separate storage room located in an excellent location;
- The apartment is located on the 1st floor in the complex "Genderparkflat" directly on a park and close to the city center with all imaginable amenities;
- Sufficient (free) parking at the complex;
- Healthy VVE, service costs are approximately € 122.95 per month (excluding advance heating costs);
- Acceptance in consultation.