

Lauwerszeeweg 5628 KE Eindhoven

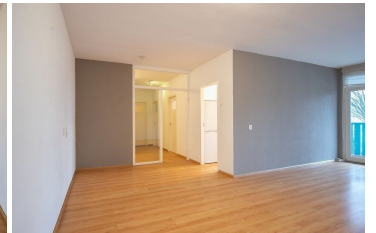
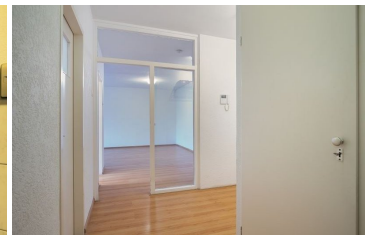
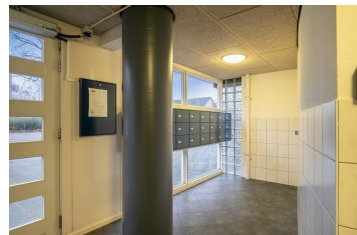
Price € 310.000,-

Kenmerken

Price:	€ 310.000,-
Number of rooms:	3
Number of bedrooms:	2
Volume:	284
Year of construction:	1970
Available from:	12-01-2024
Surface:	88 m²
Location:	Residential area
Type:	Apartment
Gas, water & light:	Exclusive

Extra's

- ✕ Garden
- ✓ Parking
- ✓ Storage
- ✕ Furnishing
- ✕ Balcony
- ✕ Garage
- ✕ Immediately available
- ✕ Lift



Sunny 3-room apartment on the 1st floor in a well-maintained apartment building with elevator and storage rooms on the ground floor. Conveniently located near the Woenselse Heide shopping center, Henri Dunantpark, WoensXL, schools, hospital, arterial roads and public transport.

Ground floor:

Entrance with recently renovated facade with mailboxes and doorbells. Neat hall with elevator, stairs and storage rooms.

The apartment's storage room is located on the ground floor and has plenty of space for storage (approx. 8m²).

1st floor:

Porch with access to the apartments.

Apartment:

Spacious hall with toilet.

From the hall you will find the spacious living room of approximately 30 m². This has a laminate floor and door with access to the sunny balcony.

From the hall and living room you reach the kitchen with wall unit equipped with refrigerator, freezer, sink, sufficient storage space, 4-burner gas hob, extractor hood and sink.

There are also two spacious bedrooms adjacent to the hall, both of which are located at the rear of the apartment. Both rooms also have laminate flooring.

The indoor bathroom has a bath/shower combination and bathroom furniture with sink.

Balcony

The spacious balcony is located on the south and ensures plenty of sunlight during the day. The balcony also offers a lot of privacy.

Particularities:

- Sunny 3-room apartment on the 1st floor in a well-maintained apartment building with elevator and storage rooms on the ground floor;
- Conveniently located near the shopping center, Henri Dunantpark, WoensXL, hospital, schools, highways and public transport;
- The apartment has laminate floors and spacious sleeping areas;
- The monthly VVE costs amount to approximately €150, plus an advance on heating costs plus hot water supply of approximately €100. This advance was always sufficient for the current owners.
- Spacious balcony of approx. 10 m² on the sunny side;
- The maps, texts and features serve for information purposes. No rights and/or obligations can be derived from this;
- Acceptance in consultation.